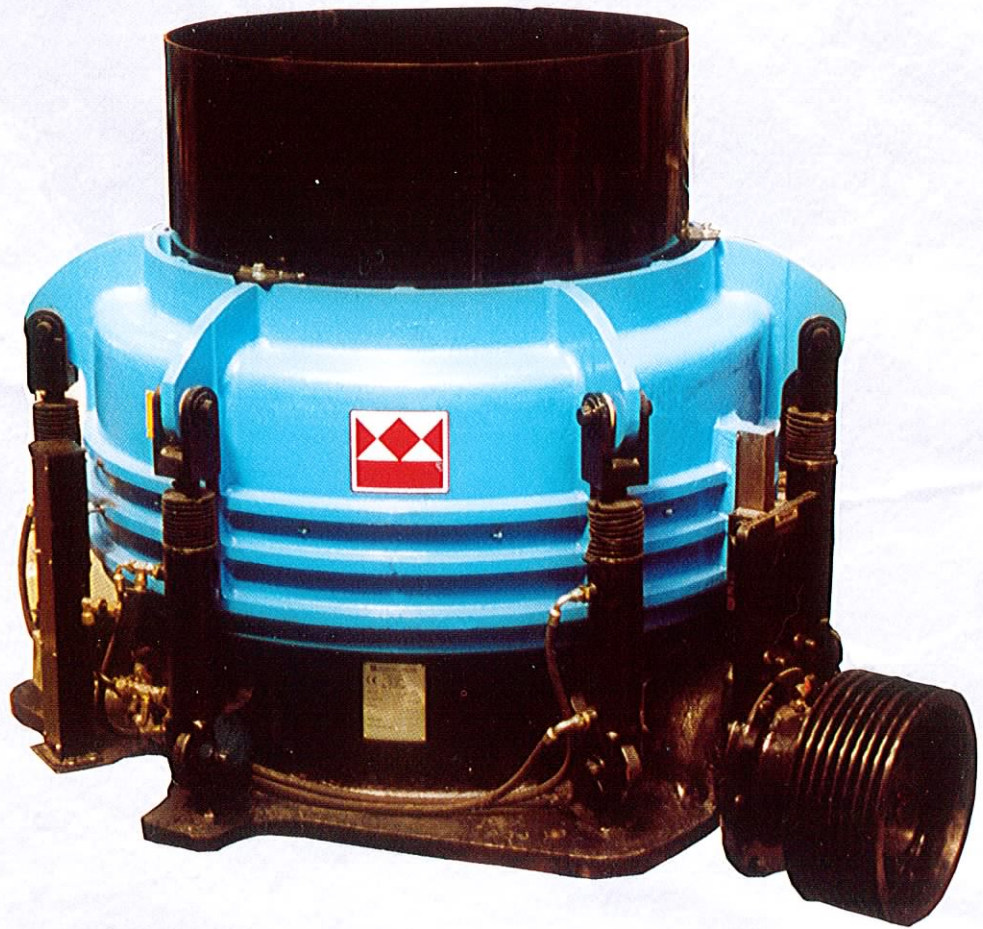


# Automax & Autosand

## High Quality Cone Crushers



- **OPTIMUM PERFORMANCE**  
Advanced crusher geometry  
Excellent product shape through attrition crushing  
High output capability  
Maximum production of high quality material
- **LOW COST OPERATION**  
High capacity with energy efficiency  
Low wear costs  
Exceptional reliability
- **EASE OF MAINTENANCE**  
Accessible external hydraulics  
Simple assembly and dismantling  
Quick manganese change

**TEREX**  **PEGSON**

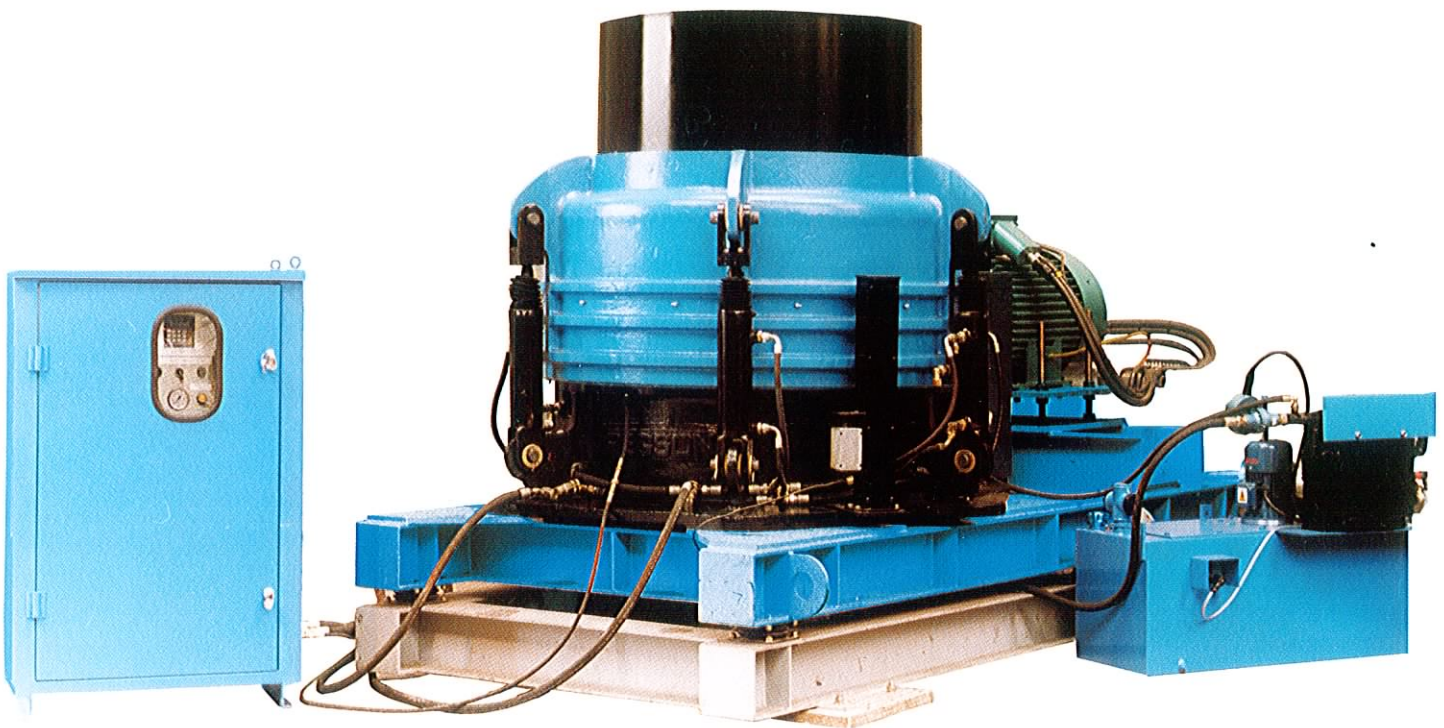
Quarry • Demolition • Recycling





# Automax & Autosand

## High Quality Cone Crushers



### **ROBUST CONSTRUCTION**

Fully automatic controls  
Designed for the most arduous applications

### **LOW PROFILE**

Important where headroom is restricted  
Ideally suited for mobile plant application

### **ADVANCED HYDRAULICS**

Accessible external hydraulics  
Hydraulic setting adjustment  
Automatic hydraulic overload protection and reset  
Hydraulic unblocking

### **SIMPLE WEAR PART CHANGE**

Designed for fast changeover  
Keeps downtime to a minimum  
Readily accessible from above machine  
- no need to remove cone head  
Unrestricted feed opening reduces blockages and bridging and maximises output

### **BALANCED DESIGN**

Minimises vibration

### **ADVANCED BEARING ARRANGEMENT**

High capacity taper and cylindrical roller bearings  
Long trouble free service  
Low friction characteristics compared with 'old fashioned plain bearings'

### **PROVEN SEALING ARRANGEMENT**

Comprises rotary seal ring, piston rings and double row labyrinth seals

### **OVERLOAD PROTECTION**

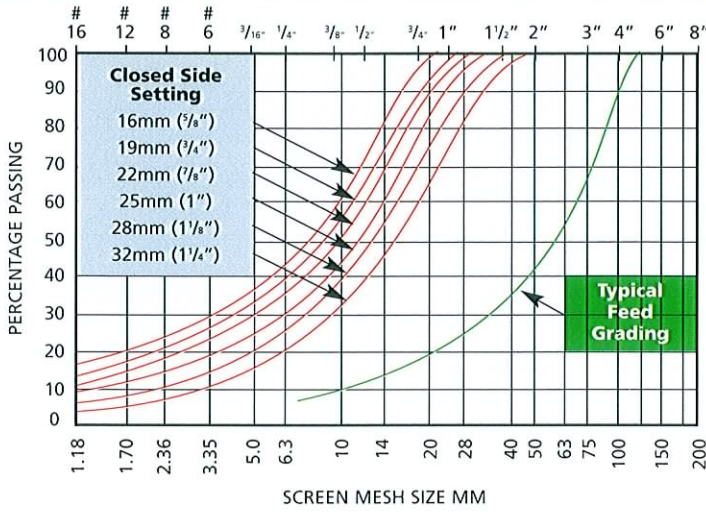
Hydraulic relief system with automatic reset

### **SETTING ADJUSTMENT/UNBLOCKING FACILITY**

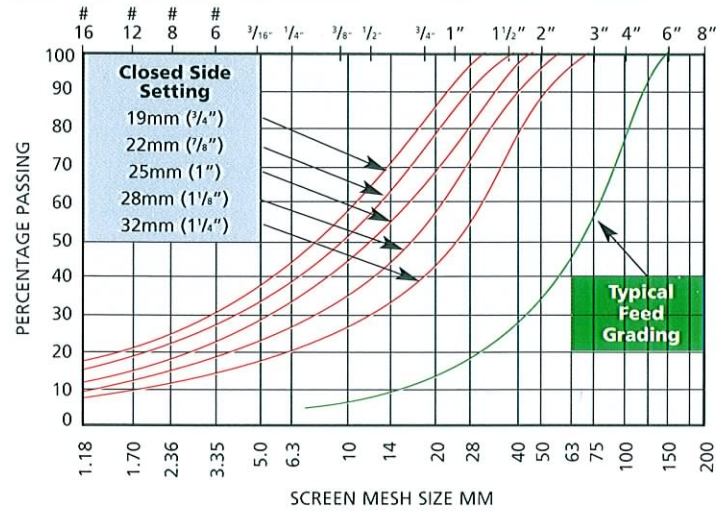
Push button controlled hydraulic cylinders raise and lower the upper frame assembly to adjust the crusher setting and to unblock the crushing chamber



### 1000 SHORT THROW AUTOMAX

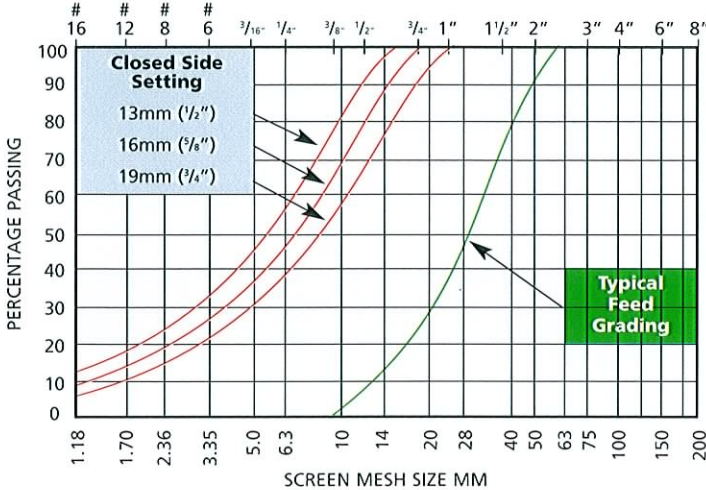


### 1000 LONG THROW AND 1300 AUTOMAX

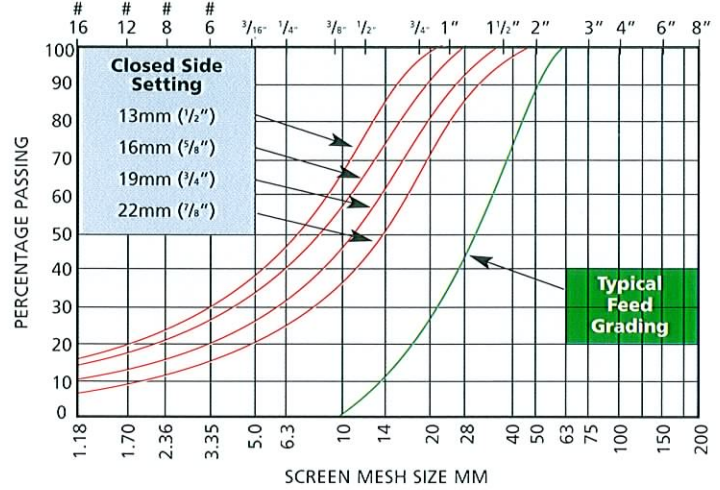


AUTOMAX CRUSHER MODEL	MAXIMUM FEED SIZE		MINIMUM C.S.S.		CLOSED SIDE SETTING AND APPROXIMATE CAPACITIES												
					CLOSED SIDE SETTING	mm		ins		mm		ins		mm		ins	
						16	5/8	19	3/4	22	7/8	25	1	28	1 1/8	32	1 1/4
1000 MC Short Throw	160	6 1/4	16	5/8	M. tph	90 - 110	105 - 120	115 - 140	120 - 150	130 - 160							
					U.S. tph	100 - 120	115 - 130	125 - 155	130 - 165	140 - 175							
1000 X.C. Short Throw	195	7 1/2	19	3/4	M. tph		105 - 120	115 - 150	135 - 160	145 - 170	150 - 180						
					U.S. tph		115 - 130	125 - 165	150 - 175	160 - 185	165 - 200						
1000 M.C. Long Throw	160	6 1/4	19	3/4	M. tph		125 - 145	140 - 170	145 - 180	155 - 190							
					U.S. tph		135 - 160	155 - 185	160 - 195	170 - 210							
1000 X.C. Long Throw	195	7 1/2	22	7/8	M. tph			140 - 180	165 - 195	175 - 205	180 - 220						
					U.S. tph			155 - 195	180 - 215	190 - 225	200 - 240						
1300 Standard	220	8 1/2	22	7/8	M. tph			220 - 255	235 - 275	250 - 295	260 - 320						
					U.S. tph			240 - 280	260 - 300	275 - 325	285 - 350						

### 1000 SHORT THROW AUTOSAND



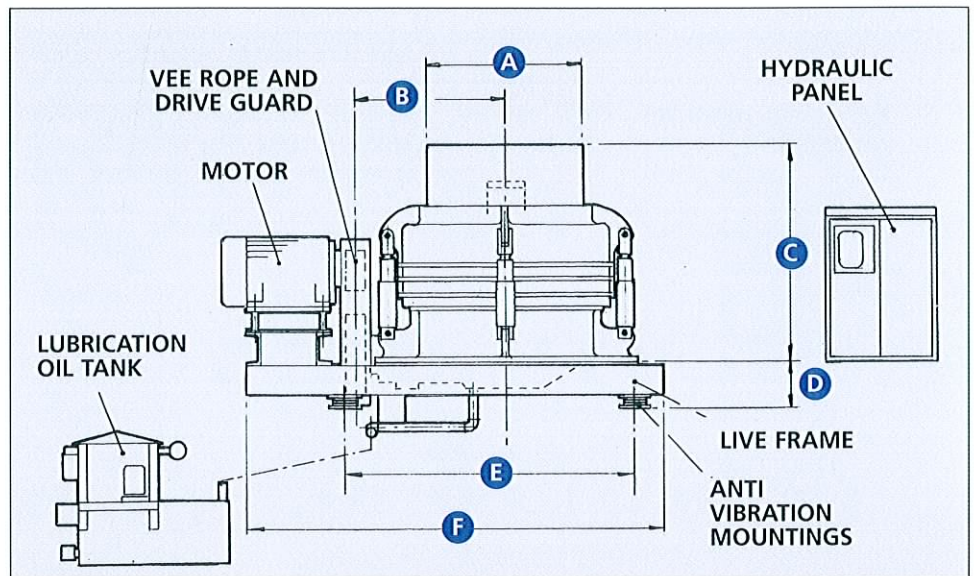
### 1000 LONG THROW AND 1300 AUTOSAND



AUTOSAND CRUSHER MODEL	MAXIMUM FEED SIZE		MINIMUM C.S.S.		CLOSED SIDE SETTING AND APPROXIMATE CAPACITIES								
					CLOSED SIDE SETTING	mm		ins		mm		ins	
						13	1/2	16	5/8	19	3/4	22	7/8
1000 Short Throw	63	2 1/2	13	1/2	M. tph	70 - 100	80 - 110	85 - 125					
					U.S. tph	75 - 110	90 - 120	95 - 135					
1000 Long Throw	63	2 1/2	13	1/2	M. tph	85 - 120	95 - 130	100 - 150					
					U.S. tph	95 - 130	105 - 140	110 - 165					
1300 Standard	63	2 1/2	13	1/2	M. tph	165 - 185	180 - 200	195 - 220	210 - 240				
					U.S. tph	180 - 200	200 - 220	215 - 240	230 - 260				

Feed and product curves are relative and based on actual test data. If the feed varies from that shown, products and capacities will also vary. Consult BL-Pegson for advice.





OPTIONAL EXTRAS
CAGE MOTOR 1500 RPM
VEE ROPE DRIVE, GUARD AND MOTOR PULLEY
LIVE FRAME ASSEMBLY WITH A.V MOUNTINGS
SYSTEM 3 HYDRAULICS
SYSTEM 4 HYDRAULICS

### DIMENSIONS

CRUSHER MODEL	1000 Automax Autosand		1300 Automax Autosand	
	mm	ins	mm	ins
A	1168	46	1410	55 1/2
B	1160	45 3/8	1415	55 3/4
C	MAX	1730	68	2268
	MIN	1525	60	2020
D	289	11 3/8	356	14
E	2250	88 1/2	2375	93 1/2
F	3286	129 3/8	3875	152 1/2

### DRIVE DETAILS

AUTOMAX AND AUTOSAND		1000	1000	1300
		Short Throw	Long Throw	Standard
Power Required	kW	160	170	225
	H.P.	215	230	300
Pulley P.C. Diameter	mm	630	630	630
	ins	24 3/4	24 3/4	24 3/4
Pulley face width	mm	213	213	213
	ins	8 3/8	8 3/8	8 3/8
Pulley Speed	RPM	936	936	718
Vee Ropes		8 - SPC	8 - SPC	8 - SPC

### WEIGHTS

CRUSHER MODEL	Automax & Autosand			
	1000		1300	
	kgs	lbs	kgs	lbs
Base Cone Crusher only	10,000	22,040	22,000	48,500
Crusher assembled on live frame with Motor, Motor pulley, Vee Belts and Drive Guard	12,000	26,500	26,000	57,300
Hydraulic Panel (System 2)	300	660	300	660
Oil Tank assembly with Airblast Cooler	350	770	390	860

**CRUSHER CAPACITY** The capacities given are approximate only and in metric tonnes. They are based on crushing clean, dry, well graded aggregate, weighing loose about 1600 kg/m<sup>3</sup> (100lbs/ft<sup>3</sup>) and having a specific gravity of 2.6 - 2.8. Wet sticky feeds will reduce crusher capacities.

Capacities will vary according to the method of feed and the size, gradation, compressive strength, toughness, friability and moisture content of the feed. Capacities are for open circuit applications.

**CRUSHER SETTINGS** The crusher settings shown in the tabulation are for general guidance only and when operation is required towards the lower end of the setting range, BL-Pegson should be consulted to verify the application.

**POWER VARIATION** The power required will vary with the feed and product size, capacity and rock characteristics.

**CRUSHER GRADING** The grading curves provided are a guide only and will vary with rock characteristics.

Your Local Authorised BL-Pegson Dealer:

#### BL-Pegson Ltd

Mammoth Street, Coalville,  
Leicestershire, LE67 3GN. England.  
Tel: +44 (0) 1530 518600  
Fax: +44 (0) 1530 518618  
email sales@bl-pegson.com • www.bl-pegson.com

#### US Office:

11001 Electron Drive, Louisville,  
Kentucky, 40299 USA.  
Tel: (502) 736 5200. Fax: (502) 736 5202

US office is not ISO 9002 registered.



All reasonable steps have been taken to ensure the accuracy of this publication, however due to a policy of continual product development we reserve the right to change specification without notice. "BL-Pegson" is the trade mark of BL-Pegson Limited, Coalville, Leicestershire, England.