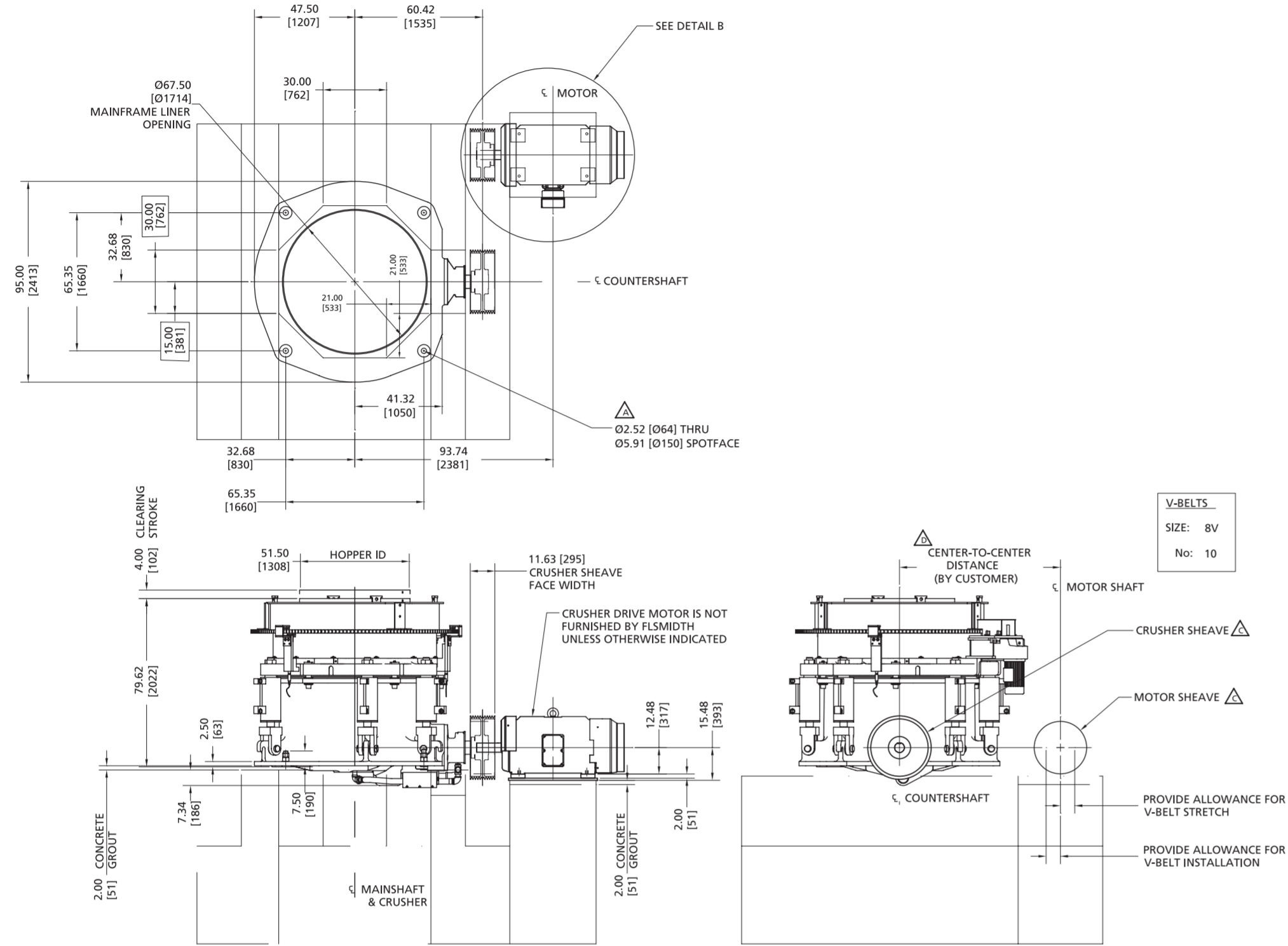


XL400 General Arrangement



All dimensions are for reference only and are not to be used for construction.

Product Gradation Table

Percent Passing For a Given Closed Side Setting

Average Feed Material (12 to 14 wi)

| Product Size | 1/4" (6 mm) | 3/8" (10 mm) | 1/2" (13 mm) | 5/8" (16 mm) | 3/4" (19 mm) | 7/8" (22 mm) | 1" (25 mm) | 1 1/4" (31 mm) | 1 1/2" (38 mm) | 2" (50 mm) |
|----------------|-------------|--------------|--------------|--------------|--------------|--------------|------------|----------------|----------------|------------|
| 4" (100 mm) | | | | | | | | | | 100 |
| 3" (75 mm) | | | | | | | | | 100 | 94-98 |
| 2" (50 mm) | | | | | | | | 96-99 | 89-95 | 65-71 |
| 1-1/2" (38 mm) | | | | | | 100 | 95-99 | 87-93 | 73-79 | 47-53 |
| 1" (25 mm) | | | | 95-99 | 92-97 | 82-88 | 71-77 | 46-52 | 37-43 | 25-31 |
| 3/4" (19 mm) | | 100 | 93-98 | 86-92 | 79-85 | 65-71 | 54-60 | 34-40 | 27-33 | 19.25 |
| 1/2" (13 mm) | 100 | 89-95 | 75-81 | 63-69 | 52-58 | 40-46 | 33-39 | 19-25 | 15-21 | 11-17 |
| 3/8" (10 mm) | 85-91 | 78-84 | 63-69 | 52-58 | 42-48 | 31-37 | 27-33 | 15-21 | 12-18 | 9-14 |
| 1/4" (6 mm) | 75-81 | 52-58 | 40-46 | 33-39 | 26-32 | 19-25 | 16-21 | 9-15 | 6-12 | 4-11 |

Values listed will vary depending on feed distribution, cavity level, feed gradation, crushing chamber, moisture, and material density.

Raptor® XL400



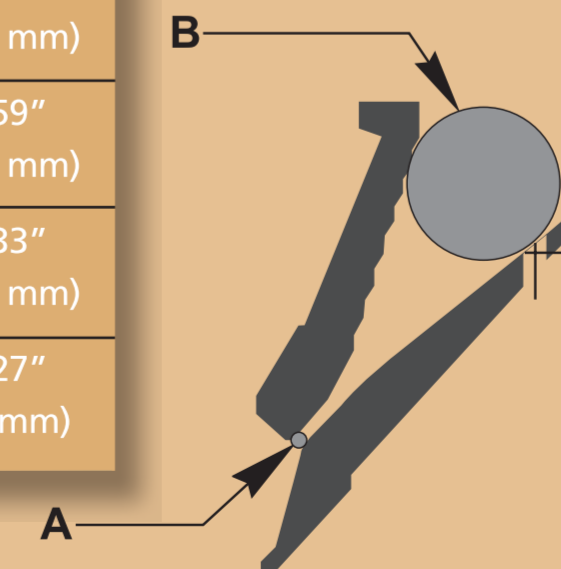
Capacity Chart

| | Setting mm | mt/hr Min | mt/hr Max | Setting Inches | stph Min | stph Max |
|-------------------|------------|-----------|-----------|----------------|----------|----------|
| Short Head Fine | 10 | 165 | 215 | 3/8 | 180 | 235 |
| Short Head Medium | 13 | 210 | 275 | 1/2 | 230 | 300 |
| Short Head Medium | 16 | 260 | 340 | 5/8 | 285 | 375 |
| Short Head Coarse | 19 | 295 | 385 | 3/4 | 325 | 425 |
| Standard Fine | 22 | 310 | 405 | 7/8 | 340 | 445 |
| Standard Fine | 25 | 340 | 445 | 1 | 375 | 490 |
| Standard Fine | 32 | 390 | 510 | 1-1/4 | 430 | 560 |
| Standard Medium | 38 | 445 | 580 | 1-1/2 | 490 | 640 |
| Standard Coarse | 45 | 510 | 665 | 1-3/4 | 560 | 740 |

As indicated above for 100 lbs. per cubic foot and impact work index of 13. Short tons per hour based on open circuit crushing with material weighing 100 pounds per cubic foot. Values are estimated "instantaneous" product samples, actual values may vary ±15%. Factors that will vary throughput are; feed gradation, cavity level, feed distribution, moisture content, and properties of the processed material.

Feed Openings

| | Minimum Closed Side Setting "A" | Feed Size "B" at min. CSS "A" |
|-------------------|---------------------------------|-------------------------------|
| Standard Coarse | .99" (25 mm) | 12.70" (323 mm) |
| Standard Medium | .87" (22 mm) | 9.79" (249 mm) |
| Standard Fine | .66" (17 mm) | 6.93" (176 mm) |
| Short Head Coarse | .39" (10 mm) | 5.59" (142 mm) |
| Short Head Medium | .38" (9 mm) | 4.33" (110 mm) |
| Short Head Fine | .24" (6 mm) | 3.27" (83 mm) |



Lifting Weights

| Main Lifting Items | (lbs.) | (kg) |
|---|--------|--------|
| Complete Crusher | 51,790 | 23,490 |
| Main Frame Assy (Includes Main Shaft and Frame Liner) | 14,920 | 6,770 |
| Bowl Assembly (Includes Bowl Liner and Hopper Assembly) | 10,641 | 4,830 |
| Adjustment Ring (Includes Clamping Ring) | 6,770 | 3,070 |
| Head Assembly (Feed Plate Assembly and Mantle) | 7,930 | 3,600 |
| Countershaft Box Assembly | 1,230 | 560 |
| Eccentric Assembly (Includes Counterweight) | 3,950 | 1,800 |
| Mantle | 2,940 | 1,330 |
| Bowl Liner | 3,390 | 1,540 |
| Power Unit | | |
| Dry | 740 | 340 |
| Wet | 1,110 | 500 |
| Lube-Air | | |
| Dry | 1,590 | 720 |
| Wet | 2,410 | 1,100 |
| Lube-Water | | |
| Dry | 1,490 | 660 |
| Wet | 2,430 | 1,100 |
| Air Cooler | 350 | 160 |

NOTE:
1. Allowable casting weights vary ±5%.